

MIP/BAR/3980 Bariatric Mattress

HIGHLIGHTS

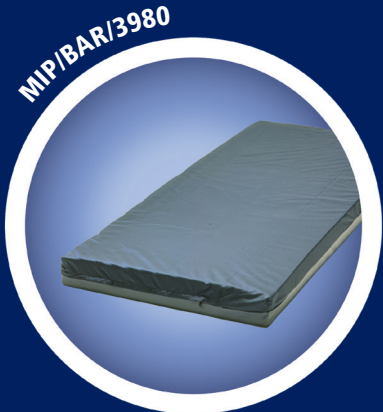
A pressure redistribution mattress for the bariatric population to ensure a healthy environment for the skin and body.

DIMENSIONS

Available in 78", 80", or 84" standard mattress lengths and width can be customized as needed (ex. 80" x 46" or 80" x 50")

WARRANTY

1 Year



+++
+++
+++
Upper layer incorporates cross die-cut section to enhance pressure reduction and patient comfort at all critical zones

 **3 Foam Layers with appropriate density to provide both comfort and support**

 **Maximum Weight 500 lbs**

 **Fire Barrier Sleeve**

 **Moisture Resistant Welded Handles**

 **Technostat Anti-Bacterial Filter**

MIP/PH/80 Safety Mattress

HIGHLIGHTS

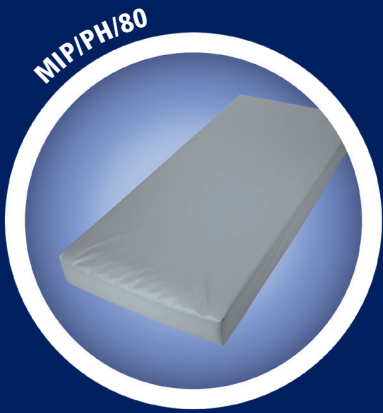
Mattress specifically designed for the agitated and restless patient population.

DIMENSIONS

35" x 80" x 6"
Available in 78", 80", or 84" standard mattress lengths and custom sizes


WARRANTY


1 Year



+++
+++
+++
Cross Die-Cut Top Layer

 **No Removable Parts**

 **Surface material features tear-proof properties as well as superior durability**

 **Seams are located "out of sight" under the mattress**

 **Fire Barrier Sleeve**

MISP/352675 Stretcher Mattress

HIGHLIGHTS

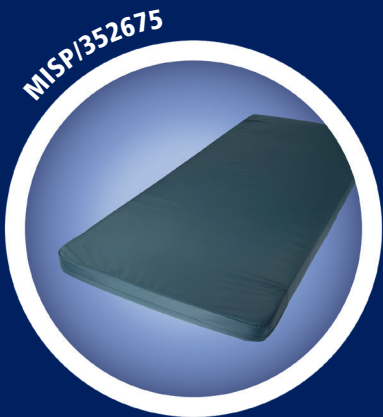
Superior pressure redistribution and comfort with surface material that allows for ideal body support.

DIMENSIONS

Available in 26" x 75" x 3" as well as 4" depth and custom sizes

WARRANTY


2 years



+++
+++
+++
Cross Die-Cut *Top Layer*

 **No Removable Parts**

 **Exterior Impermeable/ Moisture-proof**

 **Male velcro strip sewn centrally on bottom of mattress with 3 female strips supplied separately to help secure on stretcher base**

 **Fire Barrier Sleeve**

MIP/BAR/3980

MIP/PH/80

MISP/352675